



Dining Light Set

Assembly Manual

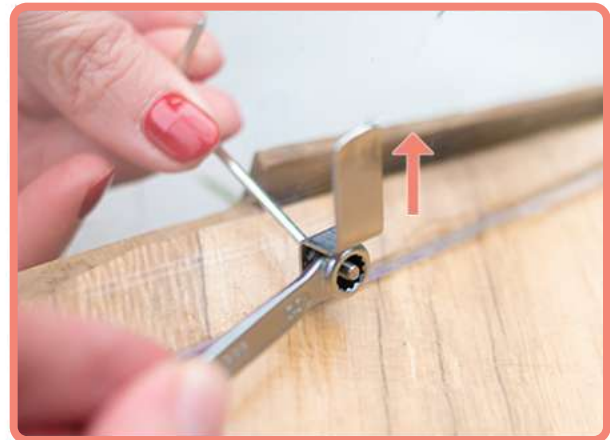
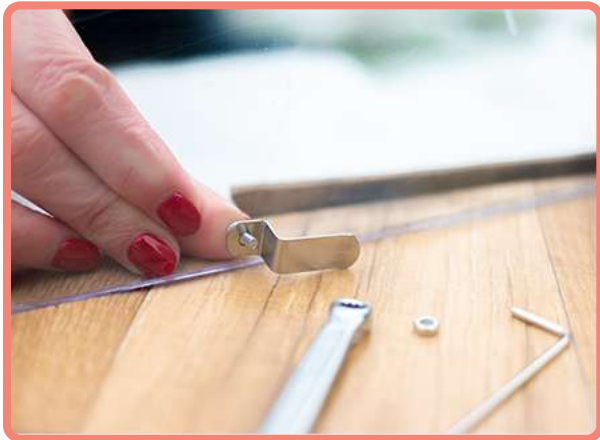
Perimeter Lighting



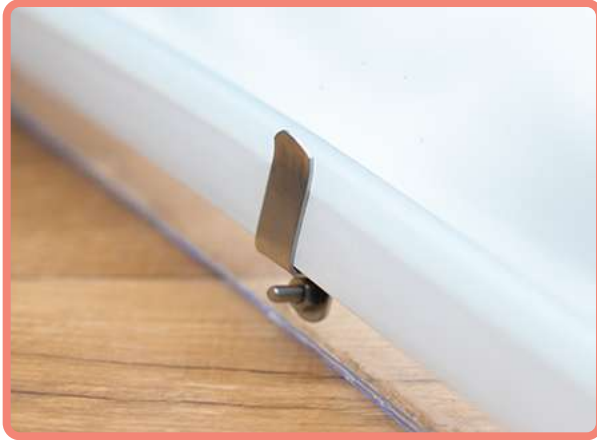
1st level panels feature accessory mounts in the middle. You will use them to attach the LED strip holding brackets.

Using the provided tools, screws and nuts, attach the brackets around the **inner** circumference of the dome.

Before you secure the nut make sure that the **bracket points upwards**, while another person standing outside the dome holds screw with the hex key.



Perimeter Lighting

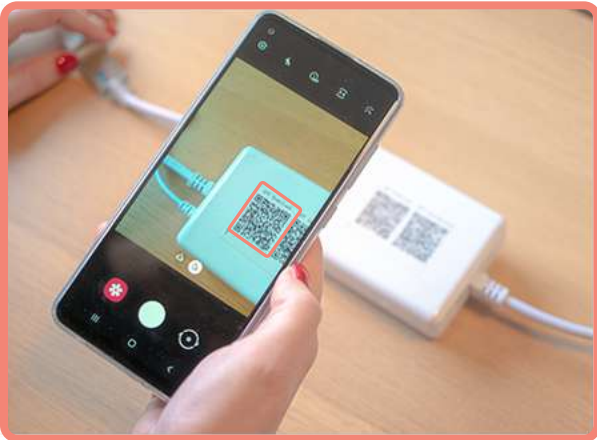


Starting next to the door area, start placing the light strip in the brackets. The semi-translucent part should be pointing upwards. **The strip should not cross the entrance.** Plug the strip to the grid.

To operate it, you can use the provided IR remote or your smartphone/tablet using the dedicated Android/iOS app.

App Setup

On the LED controller box scan the QR code labelled “App download”, this will point you to the Lotus Lantern in the Apple App or Google Play Store.



Install the application on your device.

Once you open the application (make sure that the strip is plugged in), it should automatically find and establish the connection.

If the bluetooth on your device is disabled, the app should ask you whether it can turn it on.

If it does not, close the app enable the bluetooth on your device and reopen the app to initiate pairing.

Fairy Lights



Go inside the dome and find the top pentagonal panel. Attach the top of the fairy lights around its perimeter.

Place the thicker wire against the protruding part of the screw and tighten it with an additional nut.



Fairy Lights



The path to run the cables is up to your imagination.

Just remember the following rules:

- Handle the wires gently, do not stretch them too much.
- When you reach the screw, wrap the wire around it and secure it with the nut.
- Do not twist the wire around the screw when there is a bulb in this place.



If you want to be off-grid, you can connect the fairy lights to the USB power bank.

Fairy Lights

Get inspired! Two ways to attach the Fairy Lights that our customers like the most:



Start at the top and work your way along the edge, slightly sloping down.

Fairy Lights

Hook top of the lights to the pentagon. Gently gather all the wires towards the center of the table.



You can add your own hanging decorations.



If you have any issues with the assembly or notice missing / damaged parts
contact us: **+44 20 3868 9269** support@hypedome.com